



CITY OF CHARLESTON'S
TRAFFIC & TRANSPORTATION

Examples of Proper Traffic Control Plans

Important



ALL PERMIT APPLICATIONS THAT ARE REQUESTING STREET OR LANE CLOSURES ARE REQUIRED TO SUBMIT A TRAFFIC CONTROL PLAN WITH THE APPLICATION.



PLEASE NOTE THAT WHILE YOU CAN SUBMIT ONE OF THE TRAFFIC CONTROL PLANS IN THIS RESOURCE WITH YOUR APPLICATION, YOU ARE NOT REQUIRED TO PICK FROM THIS RESOURCE.



YOU CAN MAKE YOUR OWN TRAFFIC CONTROL PLAN, BUT PLEASE NOTE THAT **HAND DRAWN PLANS WILL NOT BE ACCEPTED.**

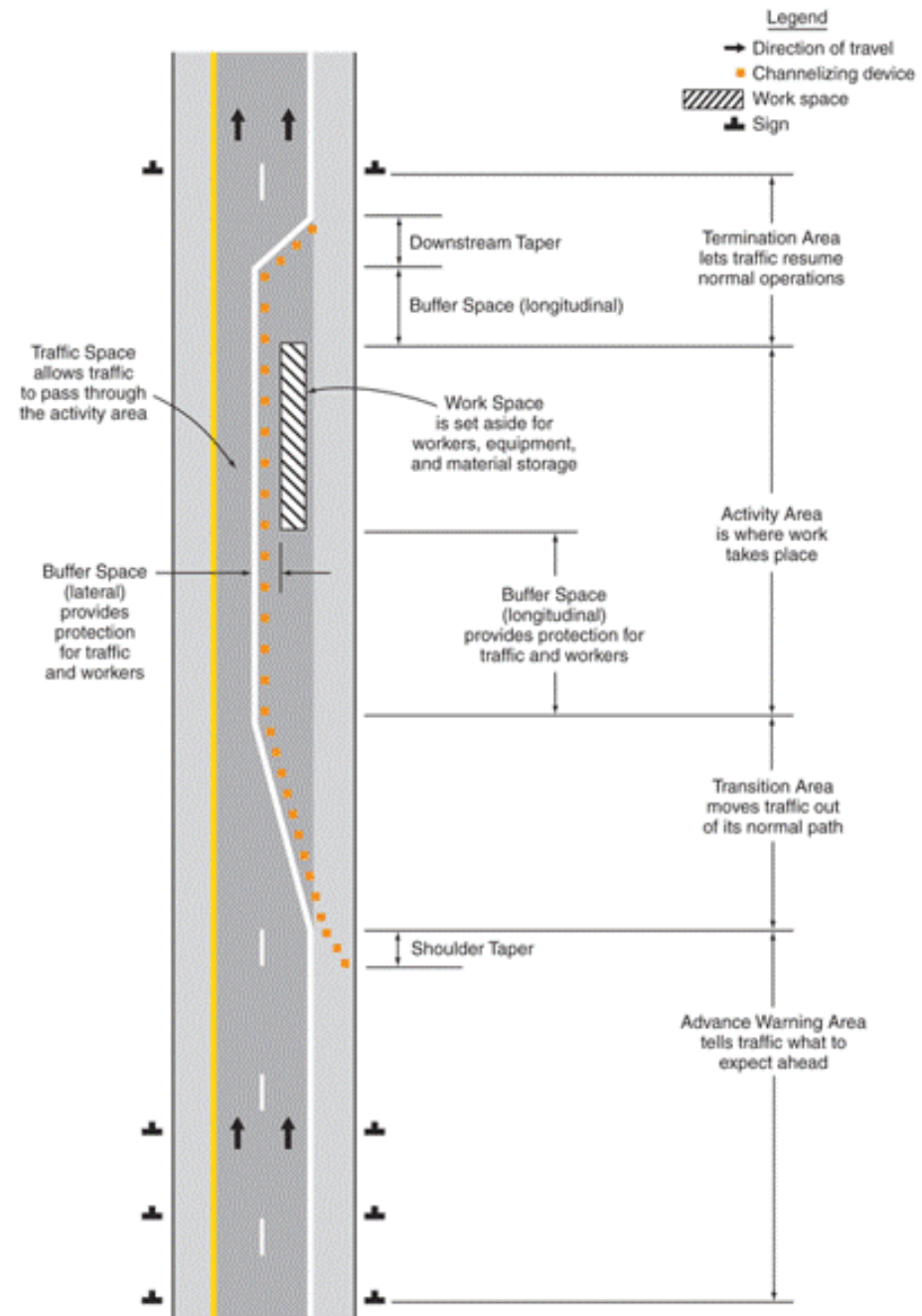


FINAL APPROVAL ON A STREET BLOCKING PERMIT APPLICATION WILL NOT BE GIVEN UNTIL THE TRAFFIC CONTROL PLAN SUBMITTED IS APPROVED.

Basic Traffic Control Plan Requirements

- ▶ Detour Routes
- ▶ Advanced Warning Signs
- ▶ Barrier Types
- ▶ Flaggers
- ▶ MUTCD Typical Applications
- ▶ T&T City Standards

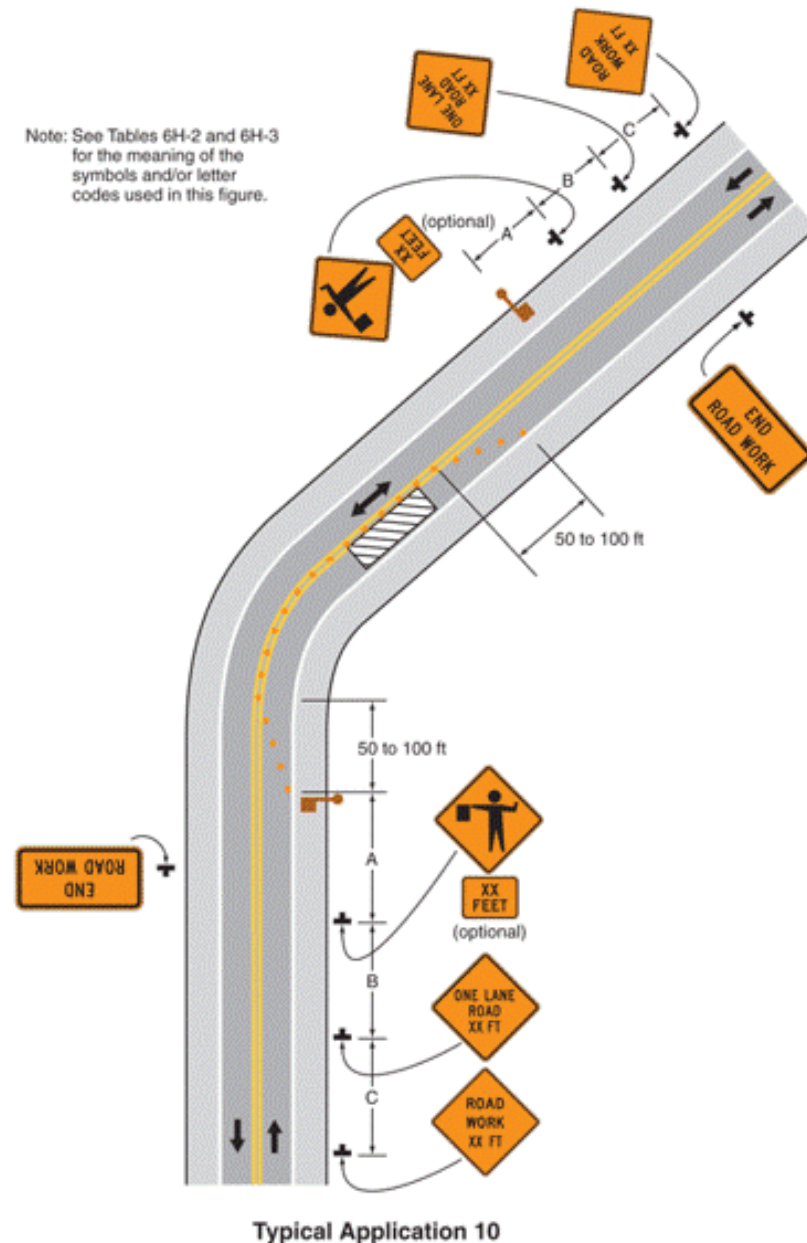
Figure 6C-1. Component Parts of a Temporary Traffic Control Zone



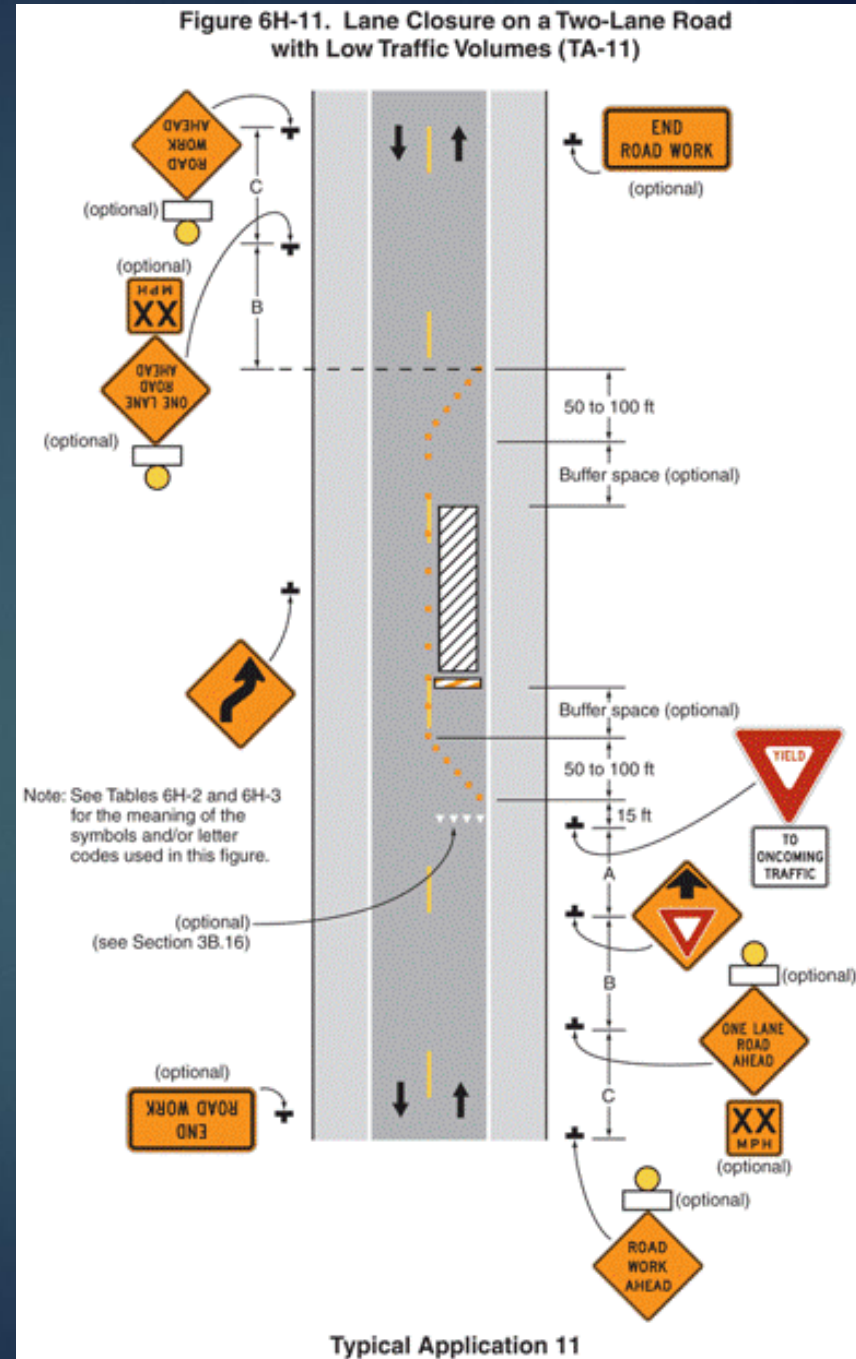
Lane Closures

Lane Closure on a Two- Lane Rd Using Flaggers

Figure 6H-10. Lane Closure on a Two-Lane Road Using Flaggers (TA-10)

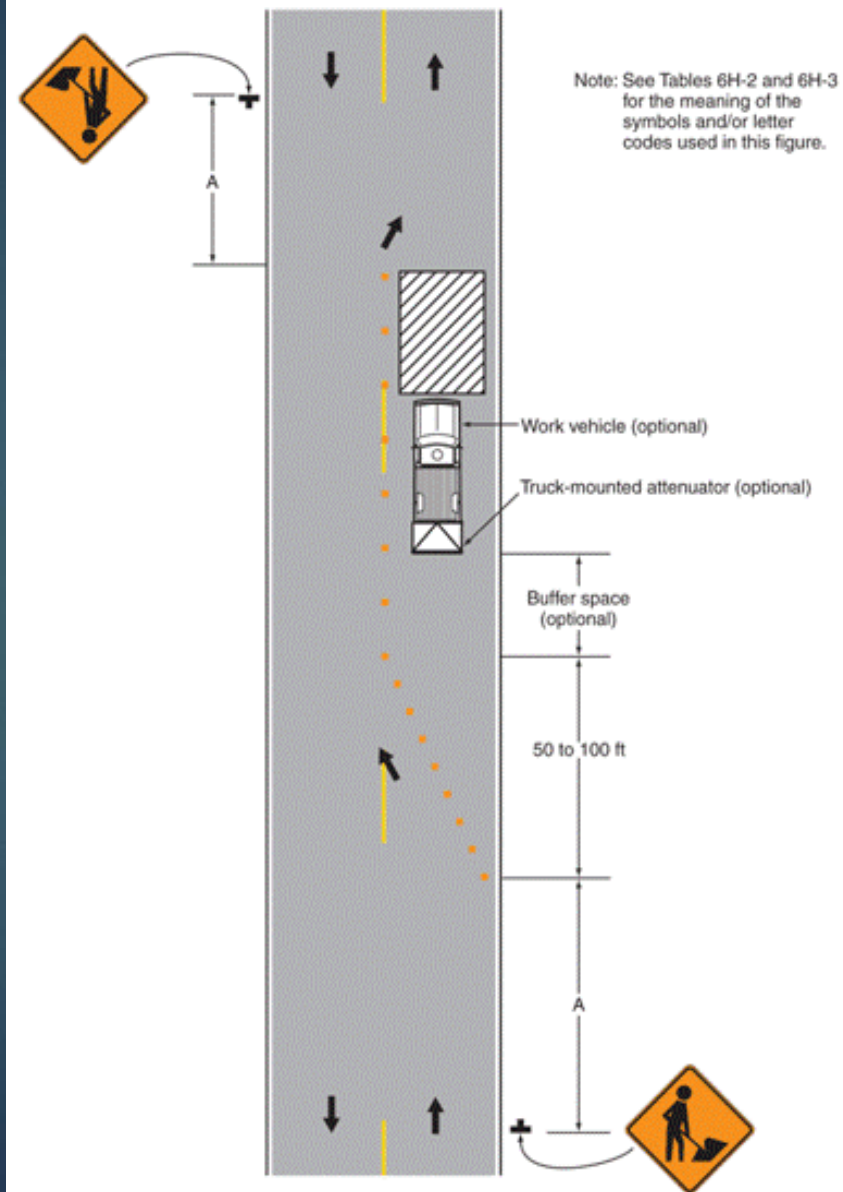


Lane Closure on a Two-Lane Rd w/Low Traffic Volume



Lane Closure on a Minor St

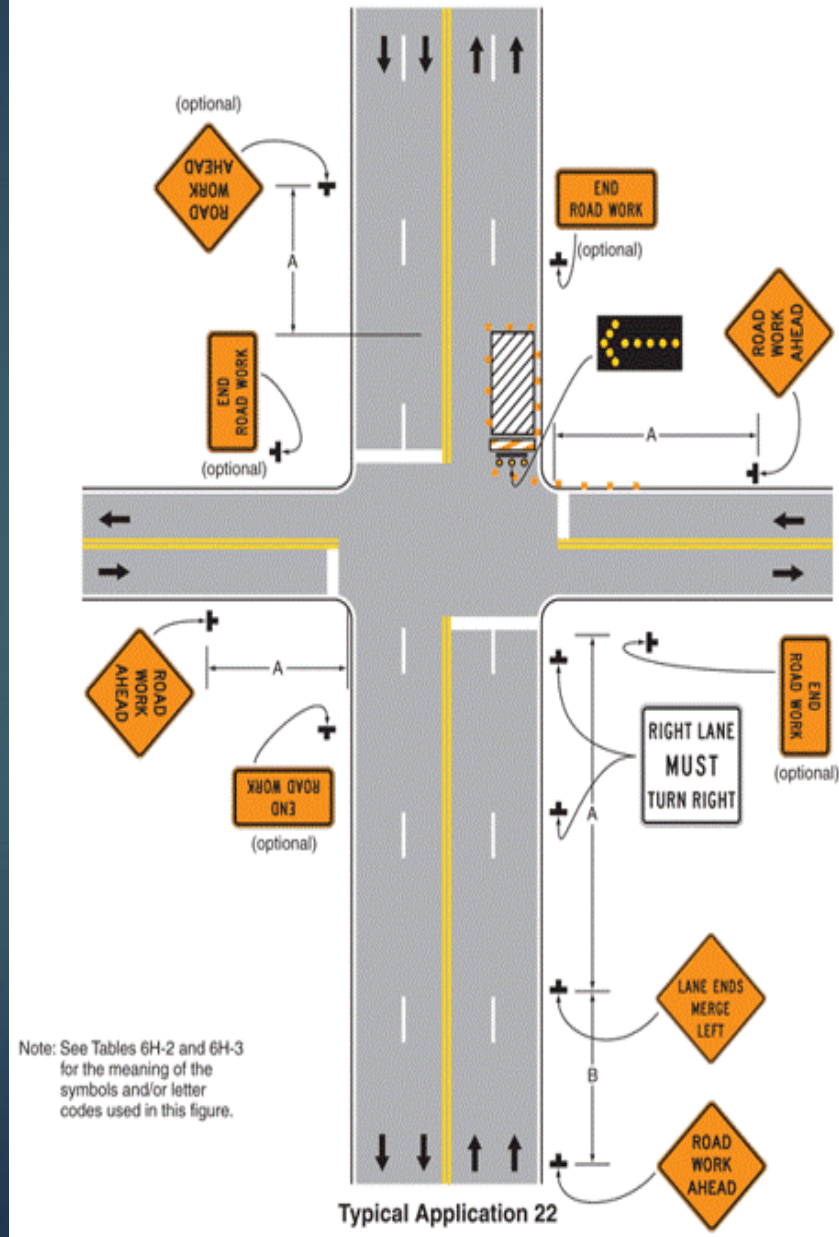
Figure 6H-18. Lane Closure on a Minor Street (TA-18)



Typical Application 18

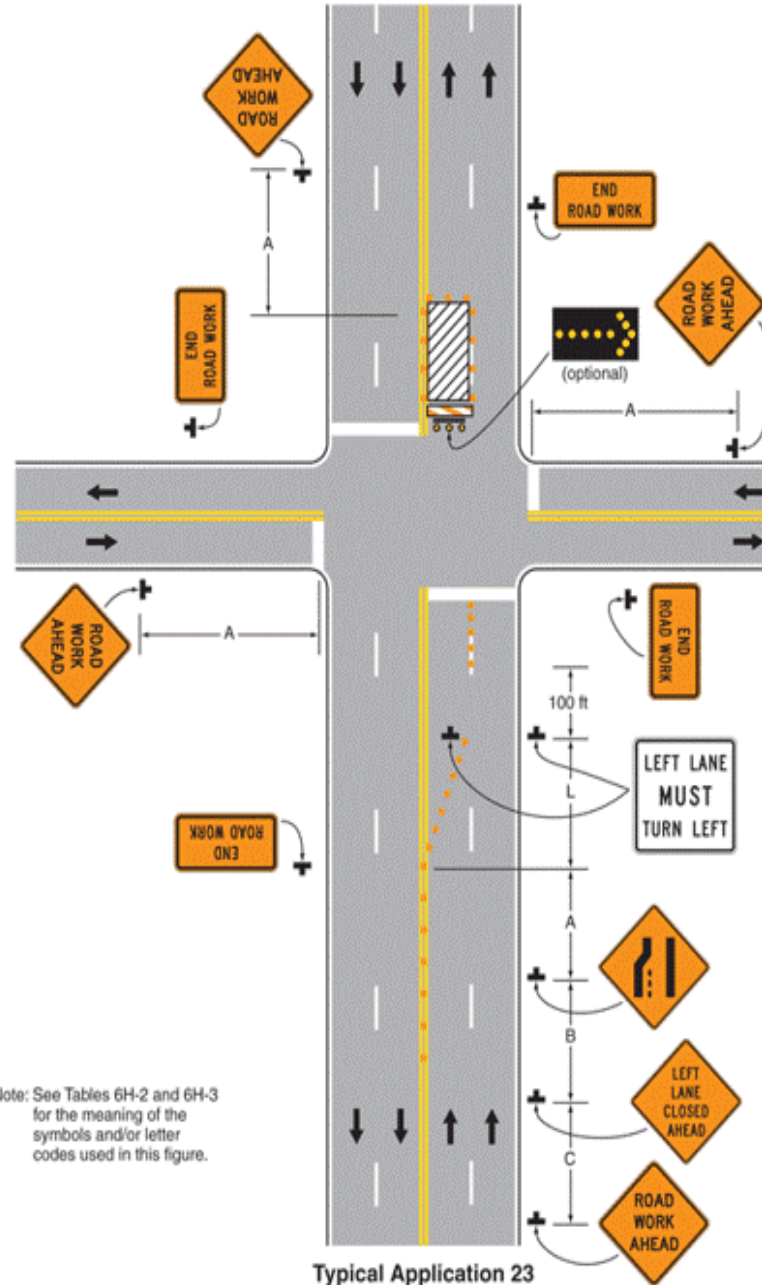
Right-Hand Lane Closure on Far Side of Intersection

Figure 6H-22. Right-Hand Lane Closure on the Far Side of an Intersection (TA-22)



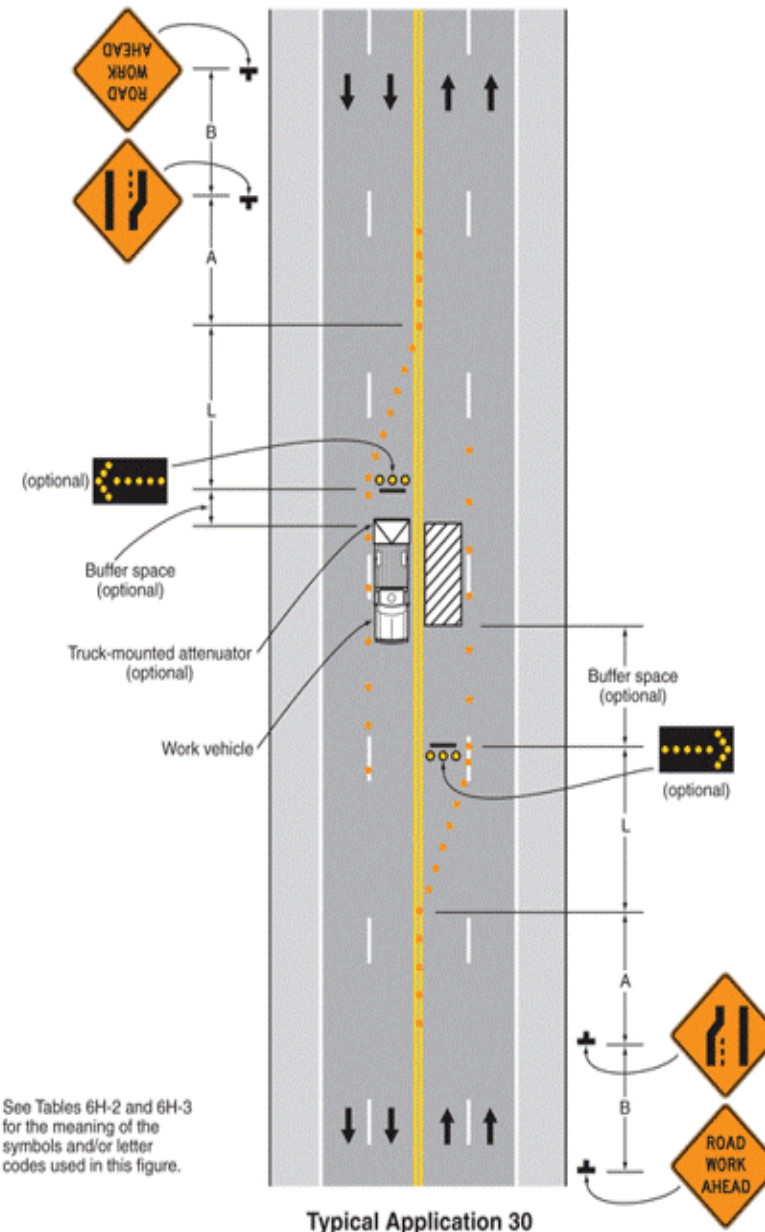
Left-Hand Lane Closure on Far Side of Intersection

Figure 6H-23. Left-Hand Lane Closure on the Far Side of an Intersection (TA-23)



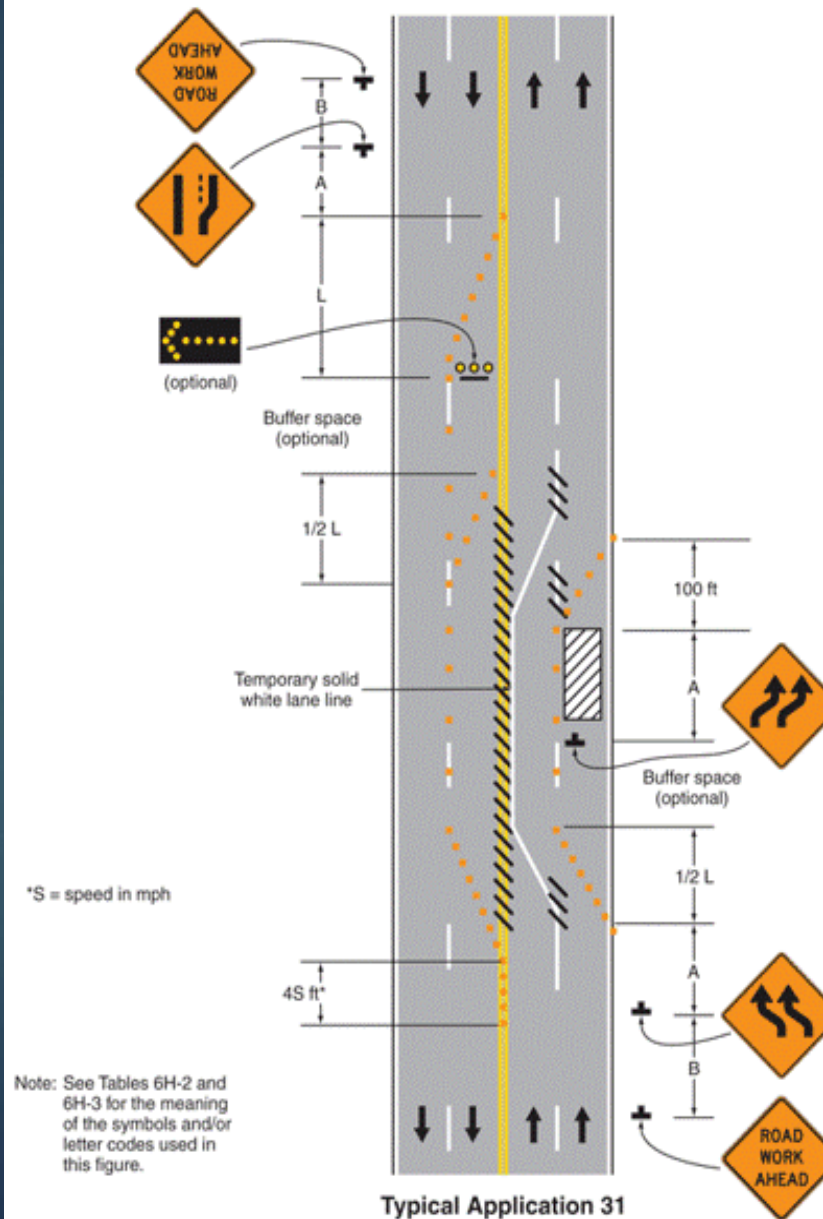
Interior Lane Closure on a Multi-Lane St

Figure 6H-30. Interior Lane Closure on a Multi-Lane Street (TA-30)



Lane Closure on a St w/Uneven Directional Volumes

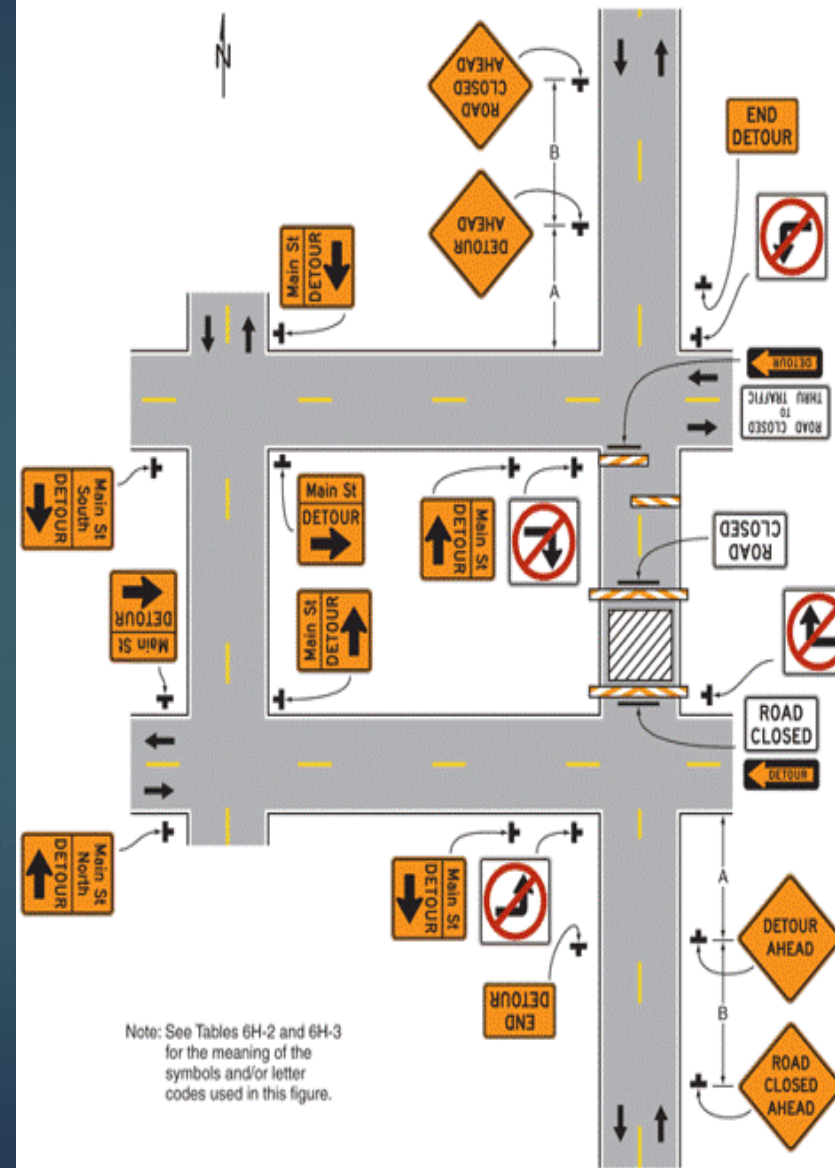
Figure 6H-31. Lane Closures on a Street with Uneven Directional Volumes (TA-31)



Road Closures

Detour for a Closed St

Figure 6H-20. Detour for a Closed Street (TA-20)

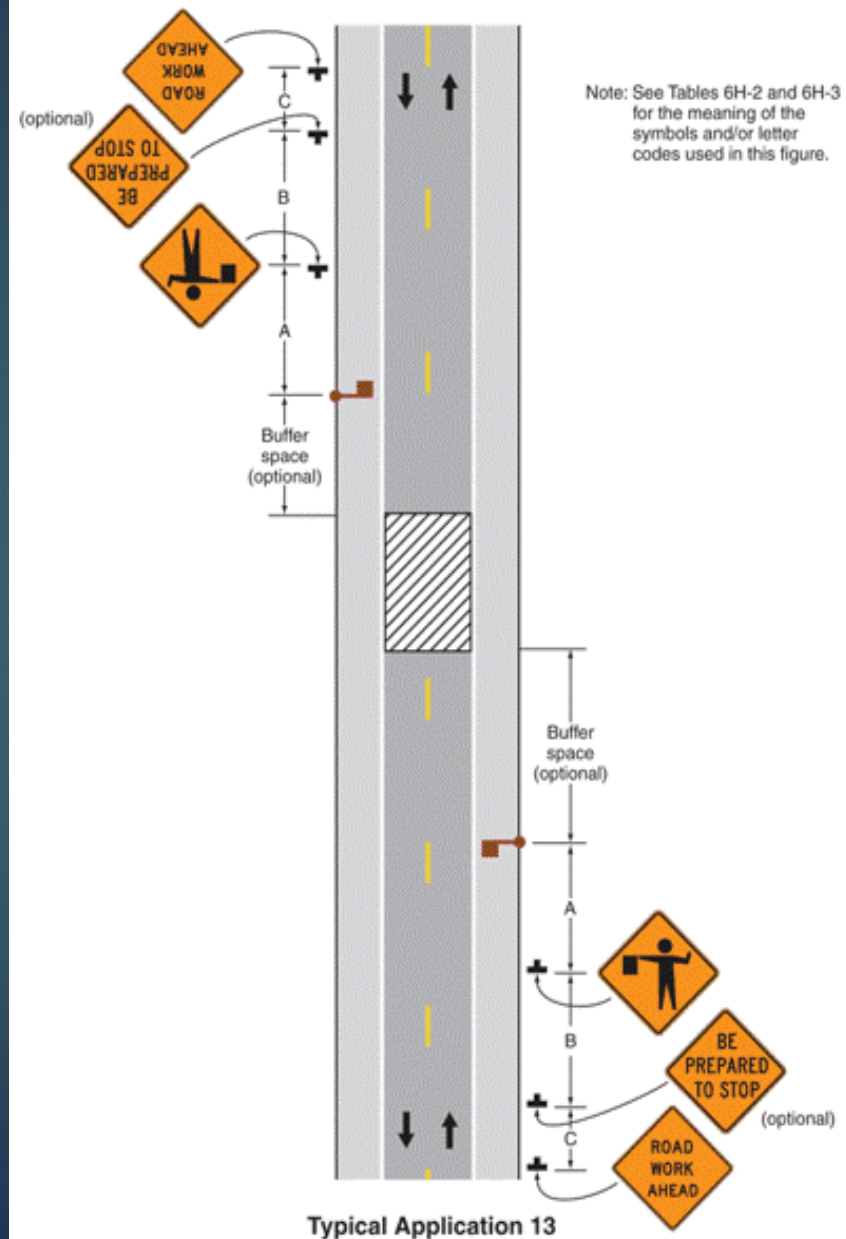


Note: See Tables 6H-2 and 6H-3 for the meaning of the symbols and/or letter codes used in this figure.

Typical Application 20

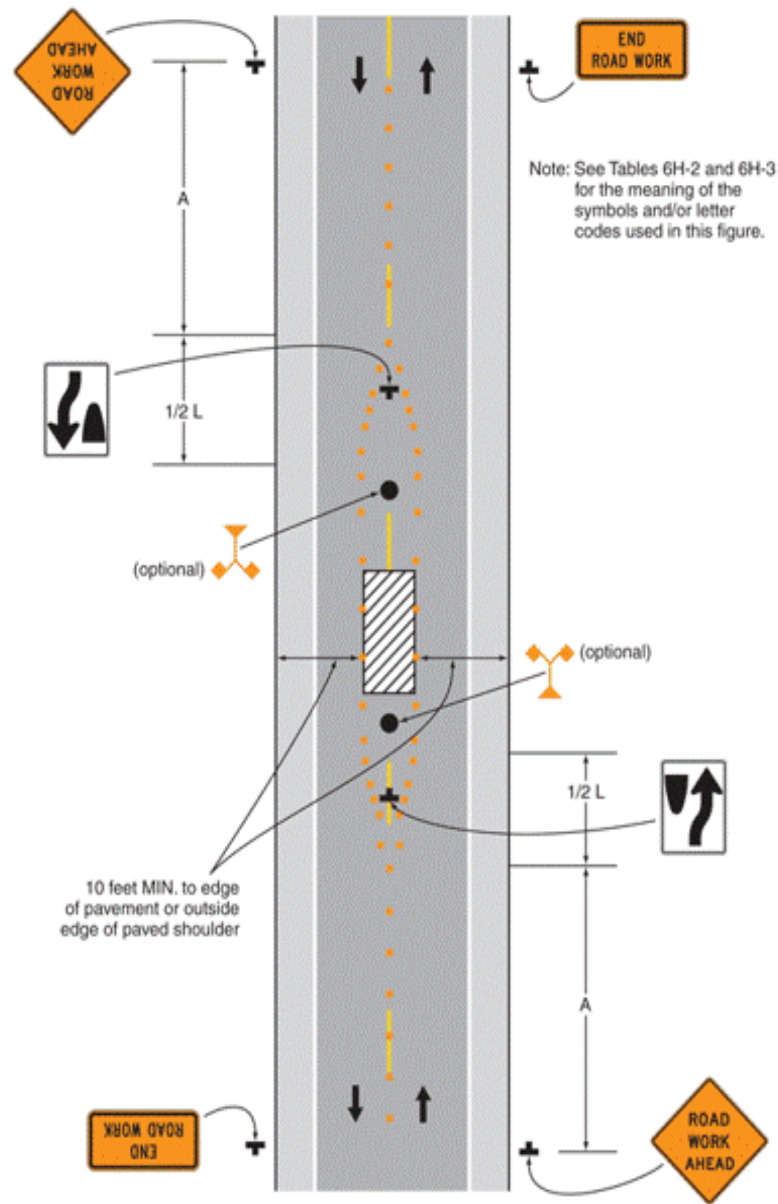
Temporary Rd Closure

Figure 6H-13. Temporary Road Closure (TA-13)



Work in Center of Rd w/Low Traffic Volume

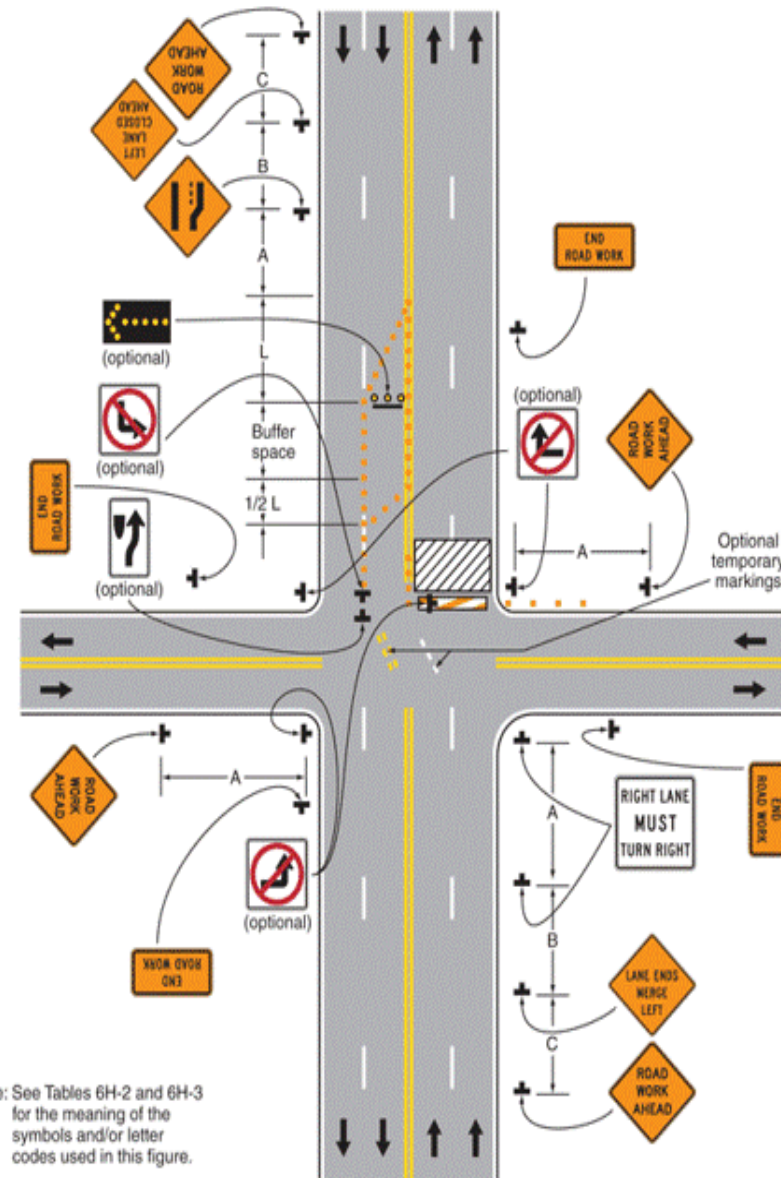
Figure 6H-15. Work in the Center of a Road with Low Traffic Volumes (TA-15)



Typical Application 15

Half Rd Closure on Far Side of Intersection

Figure 6H-24. Half Road Closure on the Far Side of an Intersection (TA-24)



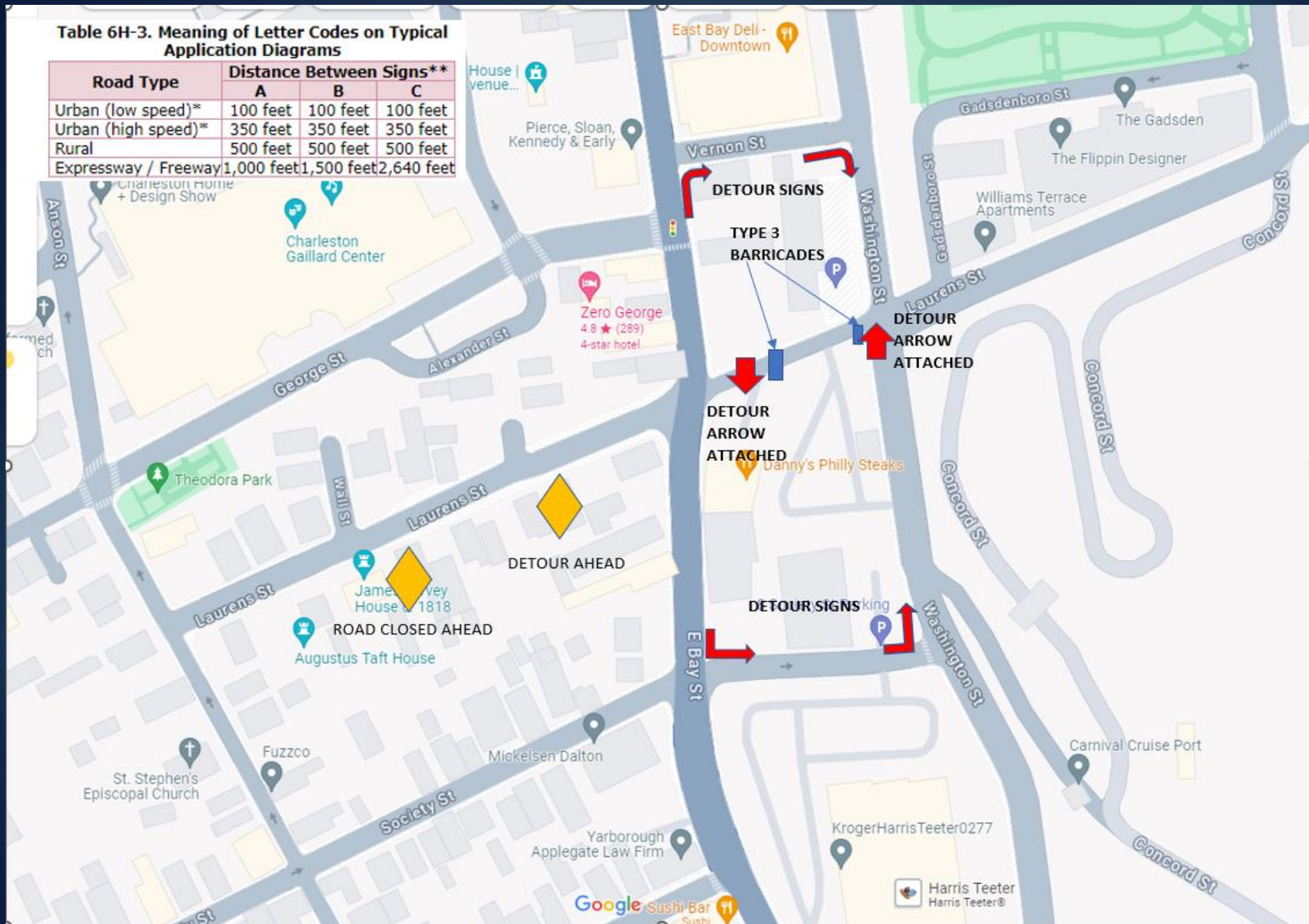
Typical Application 24

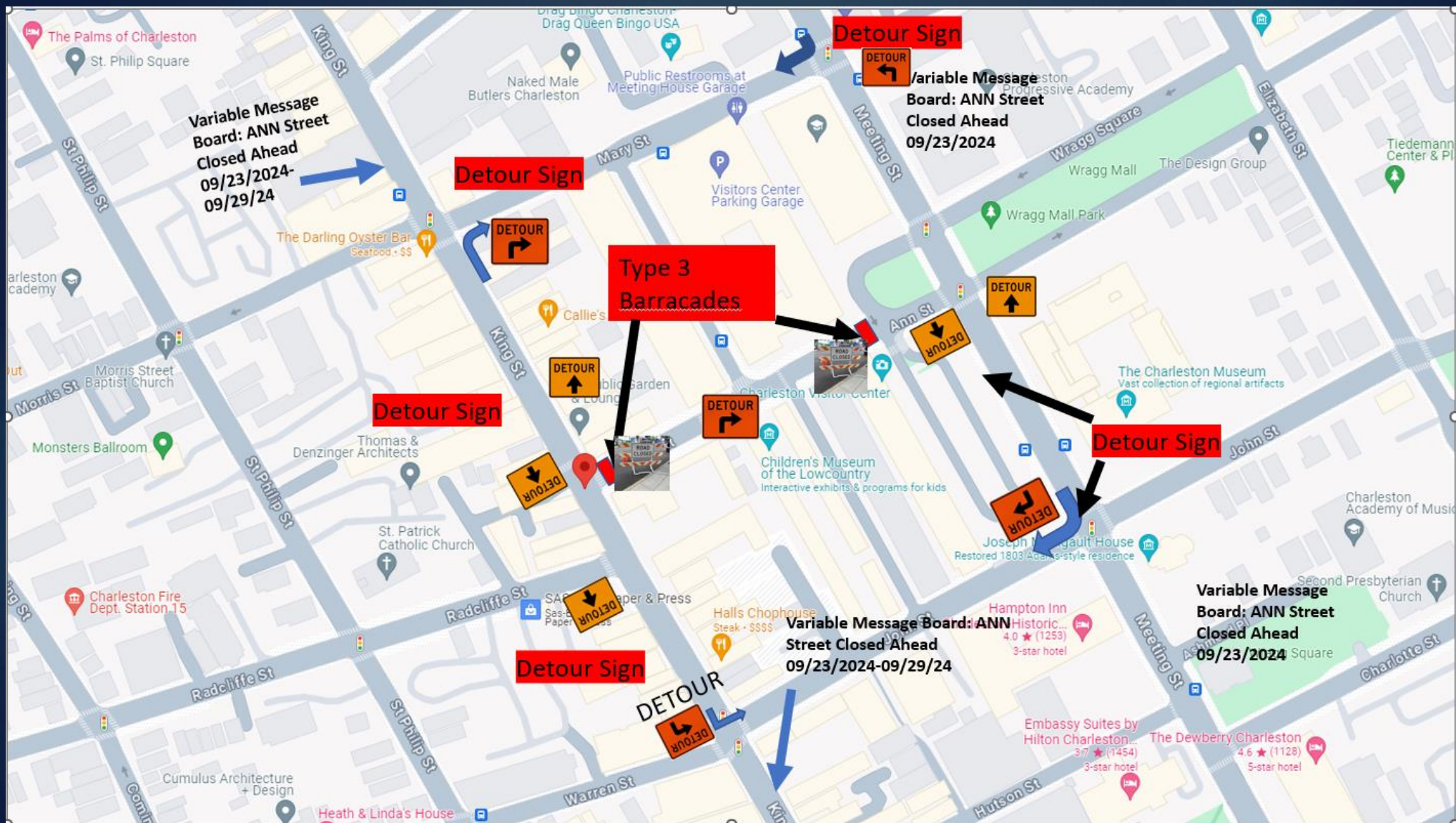
Additional Examples

All these plans have been provided by applicants
and were approved by City Traffic Inspectors.

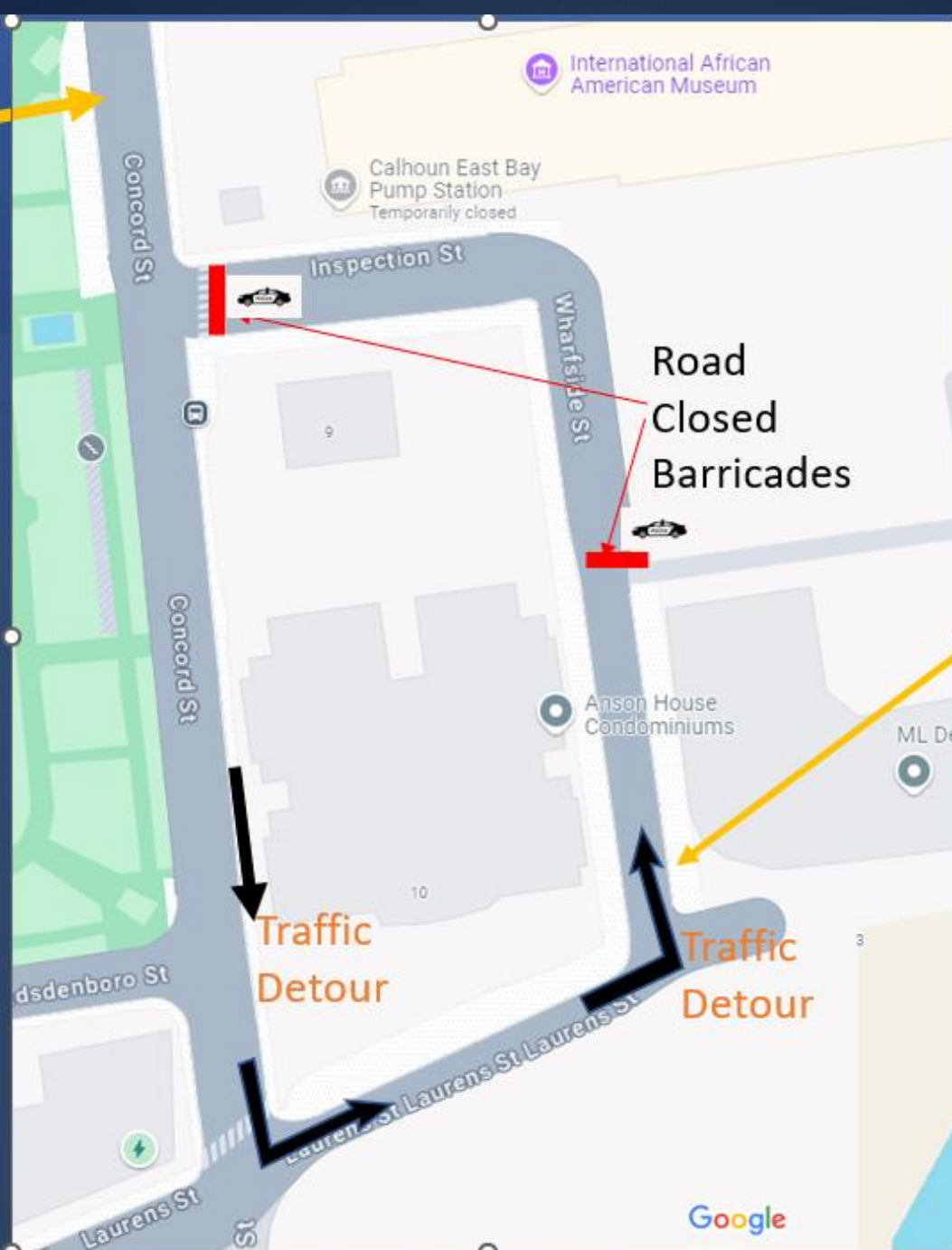
Table 6H-3. Meaning of Letter Codes on Typical Application Diagrams

Road Type	Distance Between Signs**		
	A	B	C
Urban (low speed)*	100 feet	100 feet	100 feet
Urban (high speed)*	350 feet	350 feet	350 feet
Rural	500 feet	500 feet	500 feet
Expressway / Freeway	1,000 feet	1,500 feet	2,640 feet





Need
Road
Closed
Ahead
Sign

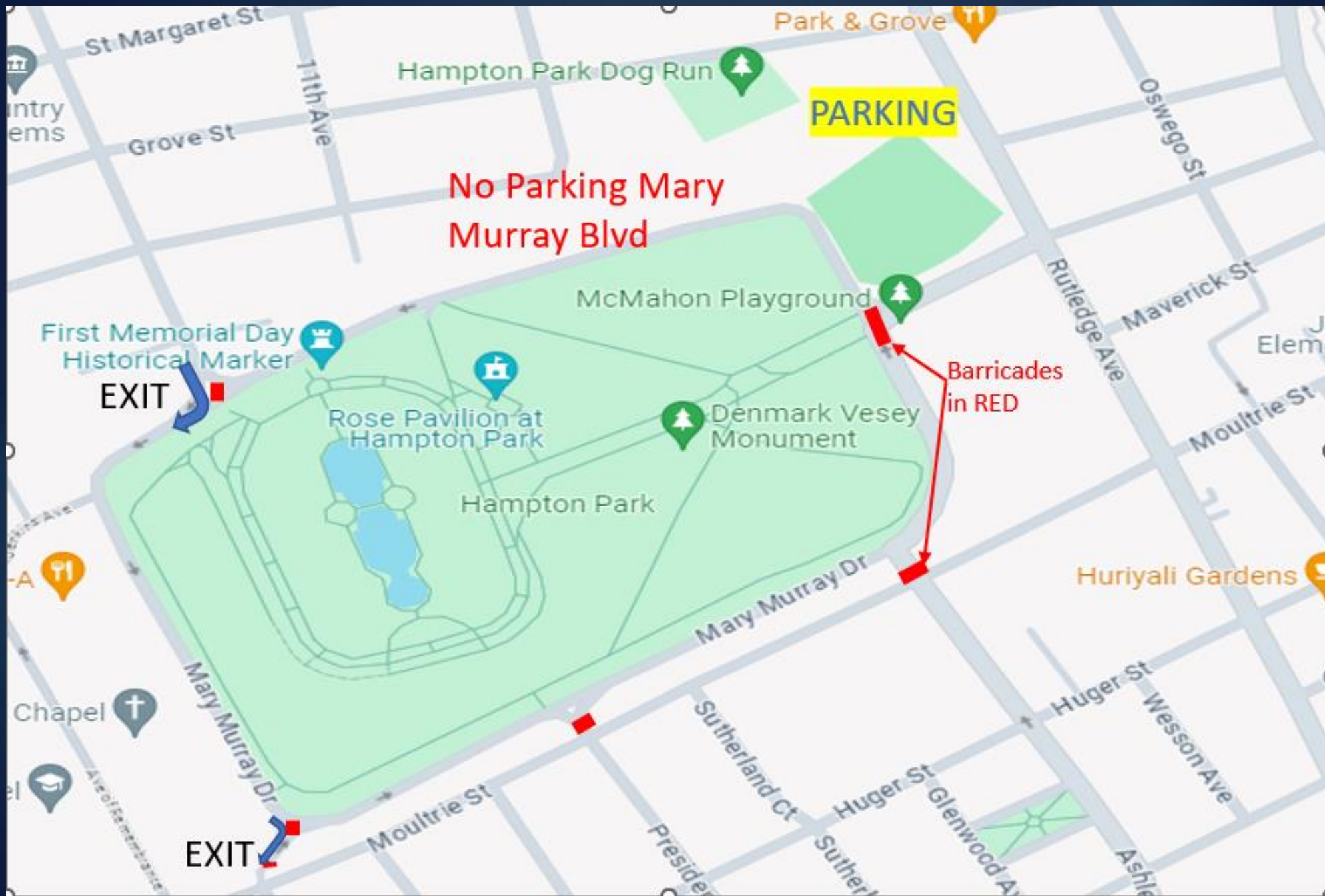


Road
Closed
Barricades

Need
Road
Closed Ahead
Sign

Traffic
Detour

Traffic
Detour



DETOUR

**ROAD
CLOSED
AHEAD**

**Work
Site**

**ROAD CLOSED
TO
THRU TRAFFIC**

