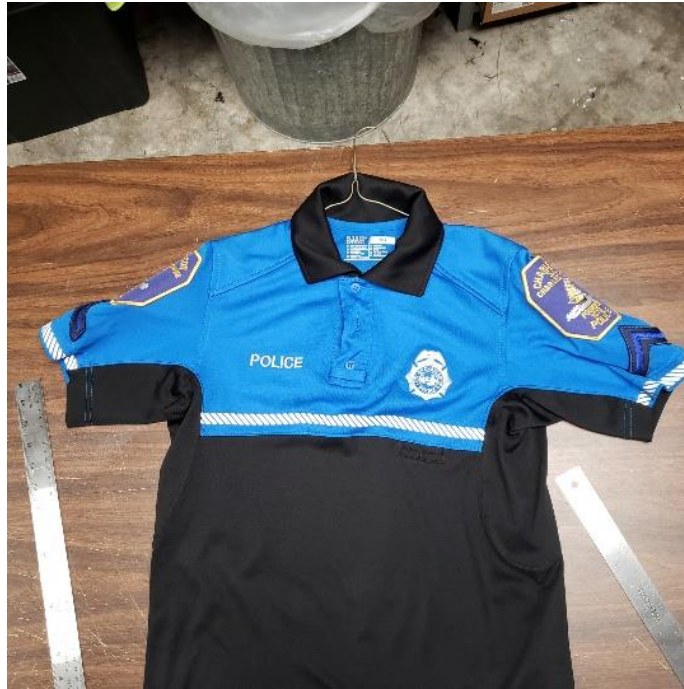


ATTACHMENT A



Bike Shirt with Front Embroidered "POLICE" & "CITY OF CHARLESTON" Badge.



Bike Shirt with 11.5" x 4" "POLICE" reflective patch centered on back.



Bike Shirt with 4.5" x 3.5" CPD patch sewn .75" below shoulder seam



Bike Shirt Back Reflective Patch Size 11.5" x 4"



CDU 5.11 Navy Blue Long Sleeved Tactical Shirt with “CITY OF CHARLESTON”

Badge Embroided on Left Chest.



CDU 5.11 Navy Blue Long Sleeved Tactical Shirt with 4.5” x 3.5” CPD

Patch Sewn .75” Below Shoulder Seam.



2" x 4" Velcro Hook with Adhesive Back to Place Above Shield onto Helmet.



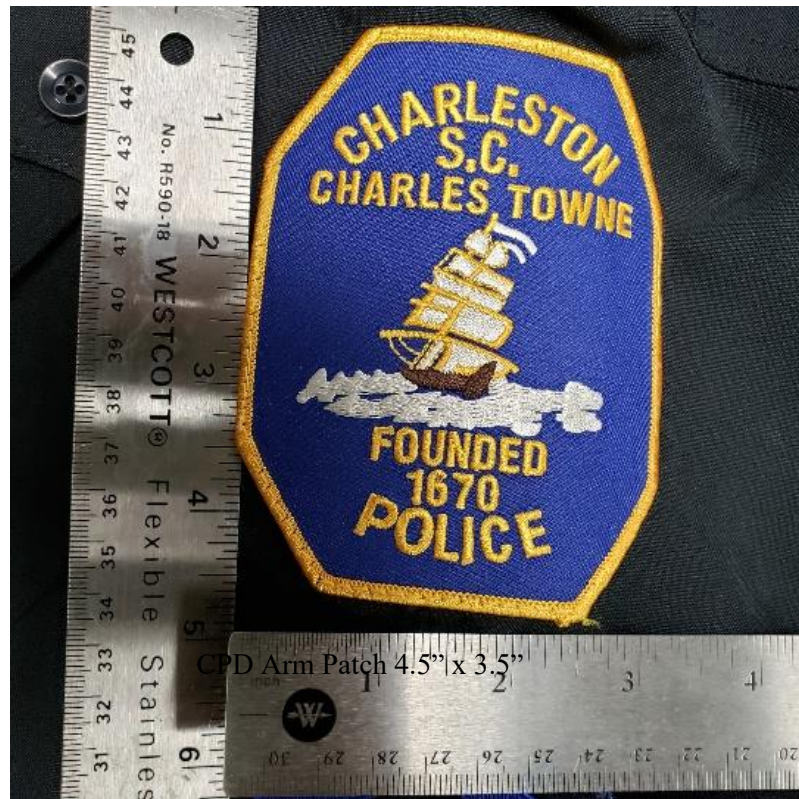
CDU Shirt Back 10" x 3" "POLICE" Embroided



CDU Shirt Back 10" x 3" "POLICE" Embroided



SPO Rank 3" x 3"



CDU Sleeve 4.5" x 3.5" CPD patch sewn .75" below shoulder seam



All Rank sewn on .25 " below CPD Patch



CDU Sleeve 4.5" x 3.5" CPD patch sewn .75" below shoulder seam



Command Staff 1" Dark Navy Blue



Dive-Rescue Shirt Embroidery Front



Dive-Rescue Shirt Embroidery Back



Dive-Rescue Shirt Embroidery Badge



Dive-Rescue Shirt Embroidery Emblem



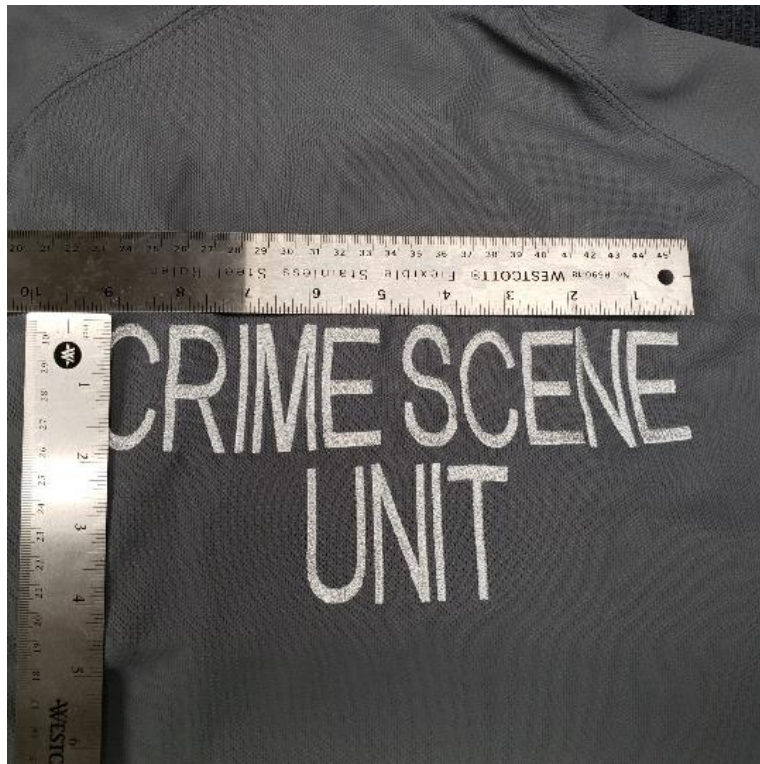
Dive-Rescue Shirt Embroidery Emblem



Dress Black Stripe



Forensic Services Polo Embroidery Front



Forensic Services Polo Embroidery Back "CRIME SCENE UNIT" 9.25" x 4'



Harbor Patrol Uniform Shirt Embroidery



"POLICE HARBOR PATROL" Embroidery 9.75" x 5"



K-9 Uniform Front



K-9 & Name tapes



K-9 Uniform Shirt Embroidery



Motor Breeches with .5" Royal Blue Stripe



Motor Wing 7" From Edge of Sleeve of Leather Jacket



MPO Stripe Placement



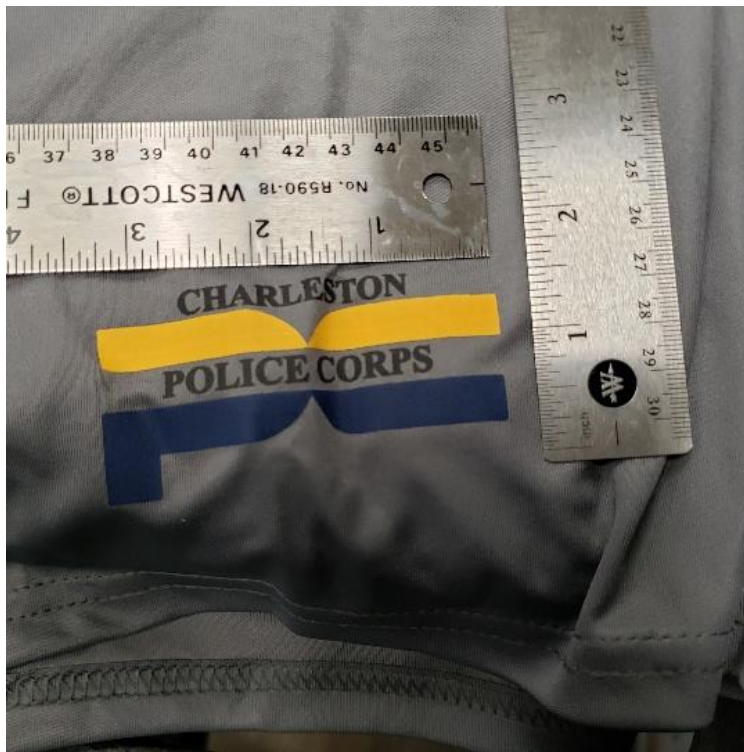
MPO Stripe Placement



Police Corps Emblem Shorts



Police Corps Emblem Sweat Pants



Police Corps Shorts Emblem 3.25" x 1.5"



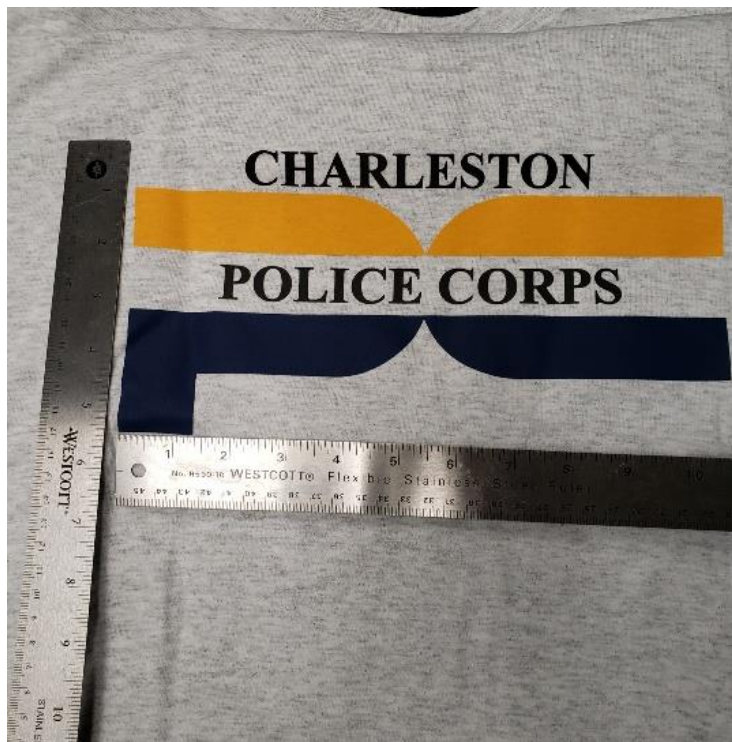
Police Corps Emblem Sweat Shirt Front



Police Corps Emblem 3.5" x 1.75" Sweat Shirt



Police Corps Emblem T-Shirt Back



Police Corps Emblem T-Shirt 11" x 5.5"



Police Corps Emblem T-Shirt Front



Police Corps Emblem T-Shirt 3.5" x 3" Front



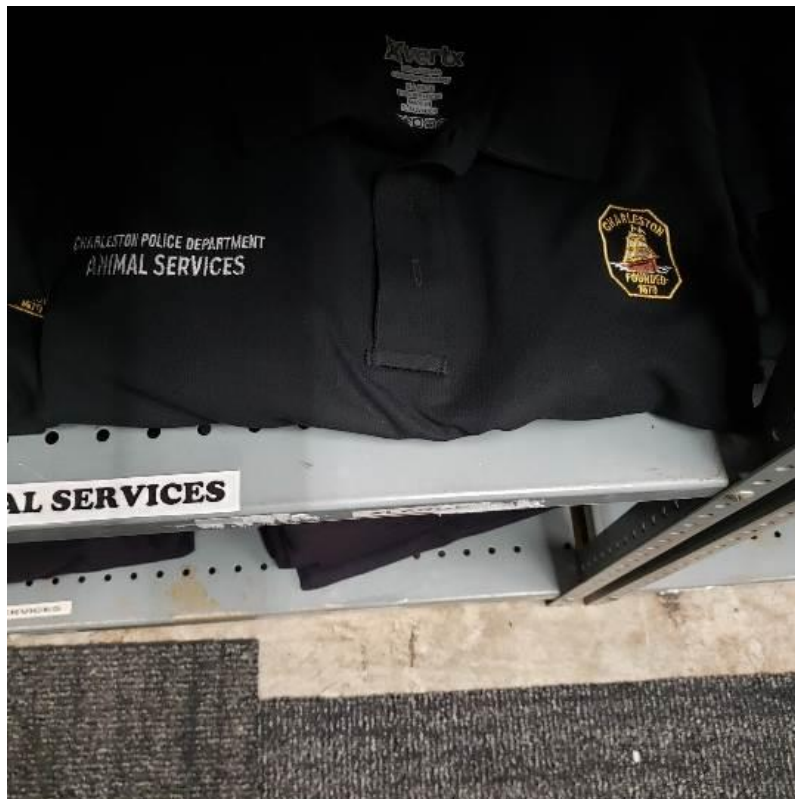
Police Traffic Vest Front



Police Traffic Vest Back



Polo Administrative Services Embroidery



Polo Animal Services Embroidery



Polo Duty Officer Embroidery



Polo NCIC Operations Embroidery





Polo Shirt CPD Embroidery Placement



Polo Shirt CPD Embroidery



Reversible Raincoat with POLICE Patch



Reversible Raincoat Front



Reversible Raincoat Back



Reversible Raincoat Front



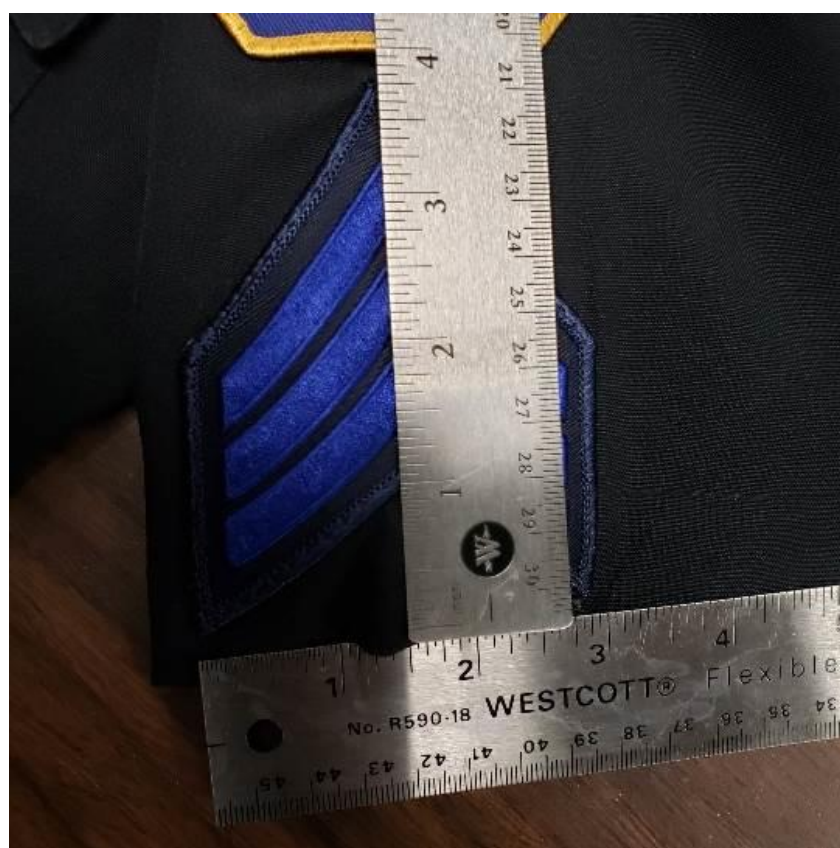
Royal Blue .5 " Pants Stripe



Royal Blue Strip Location



Sgt Stripe Location



Sgt Stripe Dimensions 3.75" x 3"



Short Sleeve & Long Sleeve 4.5" x 3.5" CPD Patch Placement .75" from Shoulder seam



SPO Stripe Location



SPO Stripe Size 3.75" x 3"



SWAT Velcro 2" x 4" Name Patch 1.5" from Zipper



SWAT Velcro 2" x 4" Name Patch 4.5" from Shoulder/Neck Seam



SWAT Velcro 2" x 4" Name Patch 1.5" from Zipper



SWAT Velcro 2" x 4" Name Patch 4.5" from Shoulder/Neck Seam



Transport Unit 4.5" x 3.5" CPD patch sewn 1" from Shoulder Seam



Turtle Neck CPD Location



Turtle Neck .5" x 1" "CPD" Embroidered on to collar



Wind Breaker Front



Wind Breaker Badge 5" x 4"



Wind Breaker "POLICE" 4" x 1.25" Front



Wind Breaker Back "POLICE" 12" Left to Right



Wind Breaker Back "POLICE" 4" High



Winter Jacket Front Embroided "CITY OF CHARLESTON" Bade



Winter Jacket Back



Winter Jacket Back With 11.5" x 4" "POLICE" Patch Centered



Left Front Chest: 4-inch by 4-inch square where a patch of the same dimensions would go with either a gold or silver badge



Right Front Chest: 2-inch by 4-inch rectangle where a patch of the same dimensions would go with either a gold or silver lettering (rank, name, badge number)



Back Upper Center: 2.5-inch by 9 7/8-inch rectangle where a patch of the same dimensions would go with either gold or silver writing (POLICE or other)



Example of the black background and boarder for all of the 2" x 4" patches



CPD Patch logo for the front of the black baseball cap. The emblem should be proportional to the size of the hat with the logo no larger than 1 7/8 inch by 2 1/2 inch.